

Zoom in, zoom out and return to original extent.

Toolbar

Search for parcels using parcel number.

Click and drag with your mouse to move the map around. You can also use the mouse wheel to zoom in and out.

The Legend is selected in the toolbar.

To remove the window, press the "x". To navigate between tools, use the arrows or select a different tool from the toolbar.

Major Roads

Zoning

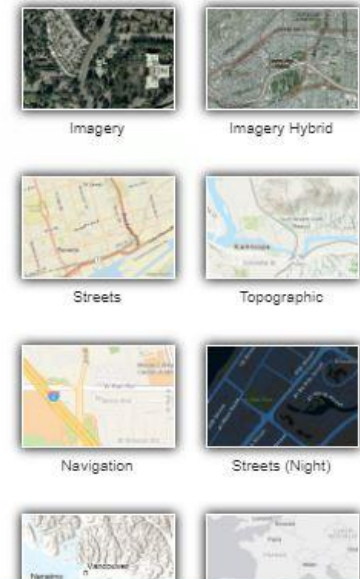
- A1
- A2
- Alligator_Point_Marina_PUD
- Bob_Sikes_Cut_PUD
- C1
- C2
- C3
- C4
- Dog_Island_PUD

Selecting one of the tools in the toolbar opens a window on the right side of the map.

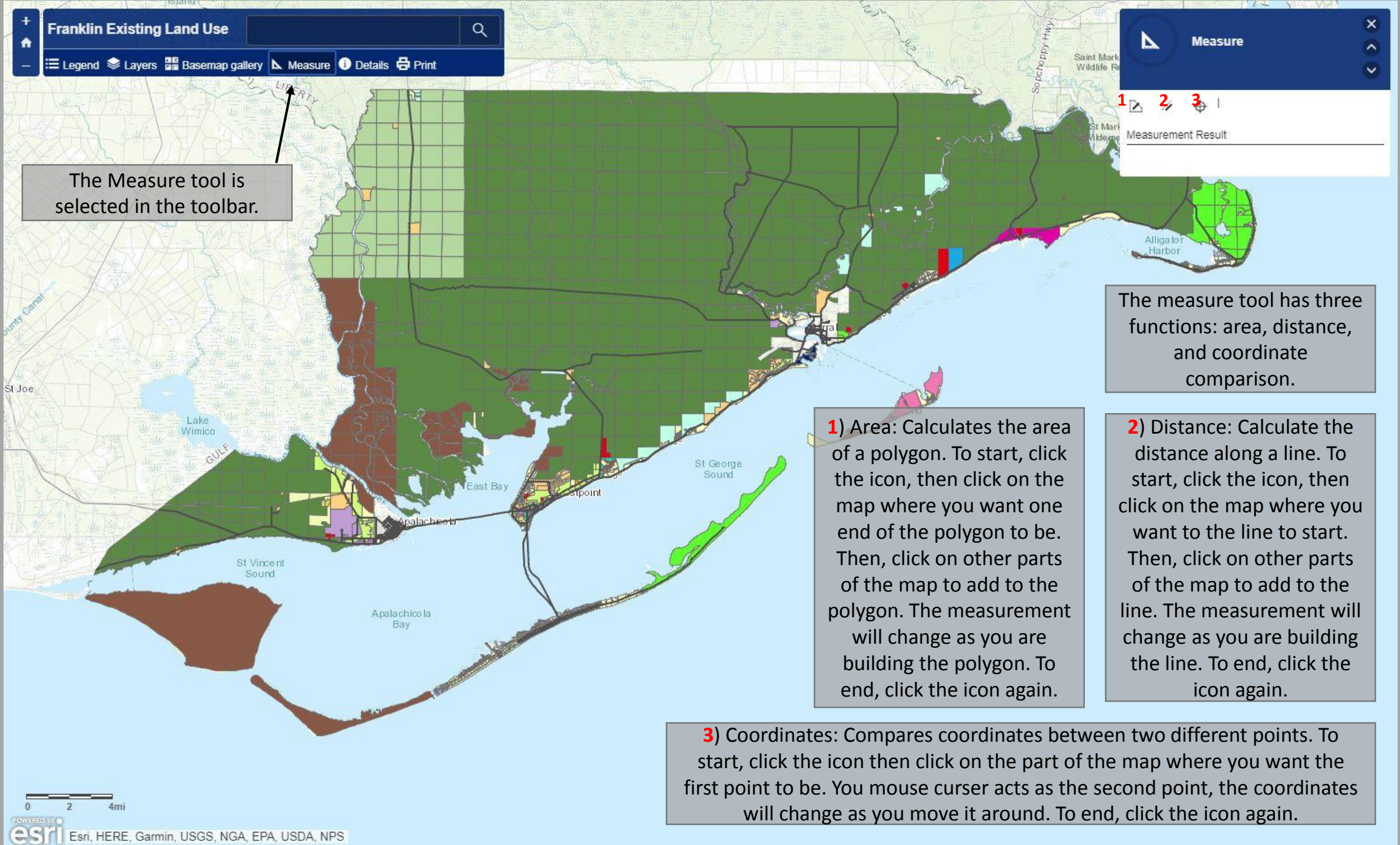
The Layers tool is selected in the toolbar.

The Layers tool allows you to turn layers on and off. The arrows to the right of the layer name give you more display options.

The Basemap tool is selected in the toolbar.



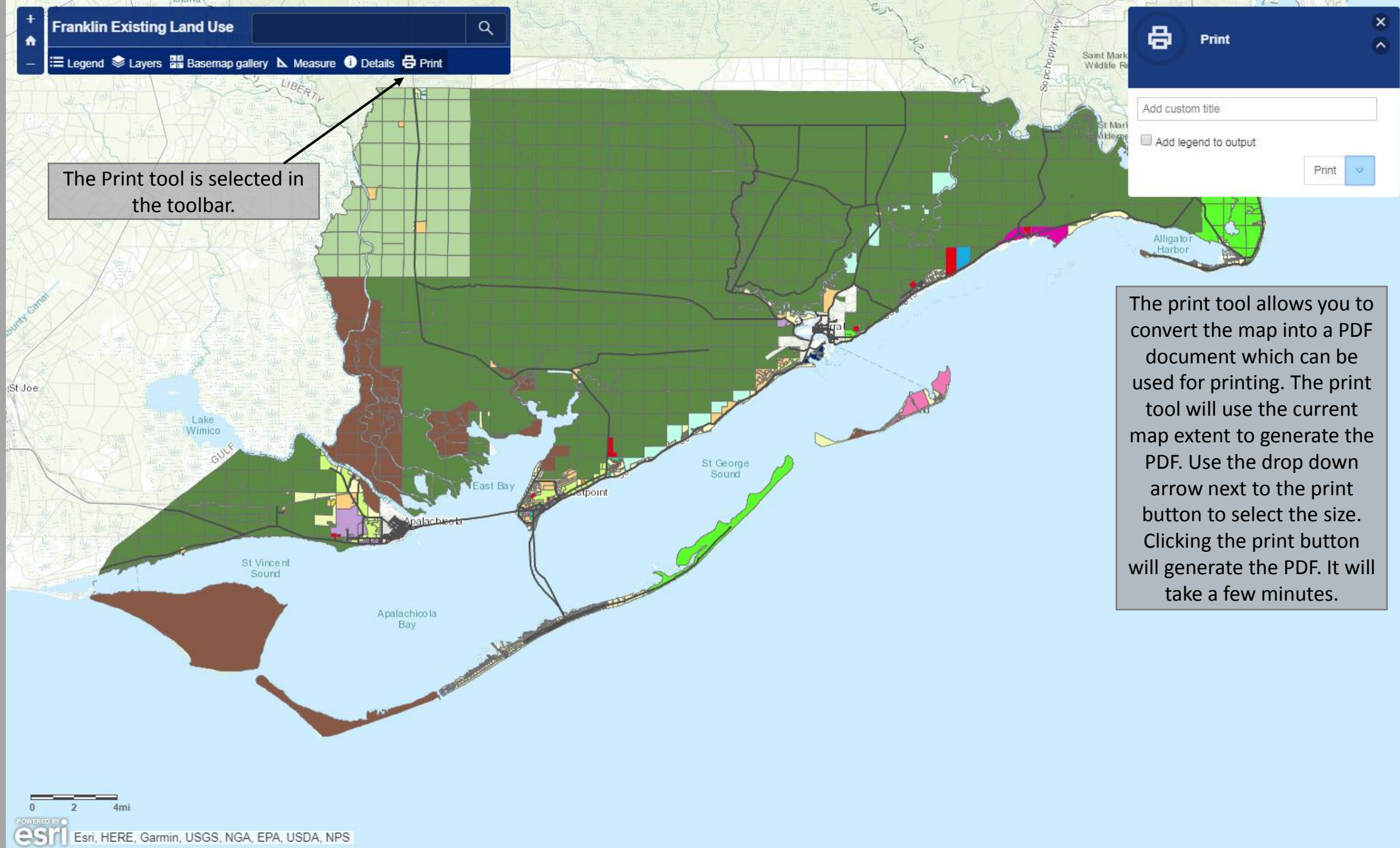
The basemap gallery lets you choose between different basemaps.



The Details tool is selected in the toolbar.

- R-1: Single Family Residential
 - R-1A: Single Family Subdivision
 - R-2: Single Family Res/Mobile Home
 - R-3: Single Family Estate Residential
 - R-4: Single Family Home Industry
 - R-5: Multi-family
 - R-6: Rural Residential
 - R-7: Multi-family High Density
 - R-8: Multi-family Medium Density
 - C-1: Commercial Fishing
 - C-2: Commercial Business
 - C-3: Commercial Recreational
 - C-4: Commercial Residential
 - I-1: Industrial
 - Z-1: Public Facilities
- Zoning from Franklin County
Parcel Land Use from Department of Revenue
Major roads from FDOT

The Details windows has more information for the map layers as well as their source.



The print tool allows you to convert the map into a PDF document which can be used for printing. The print tool will use the current map extent to generate the PDF. Use the drop down arrow next to the print button to select the size. Clicking the print button will generate the PDF. It will take a few minutes.

On the parcel and major roads layers, you can click on features to get more detailed information. The DOR_UC is the department of revenue's use code for the parcel, the JV is the value of the parcel, and the land use is how the parcel is being used according to the department of revenue.